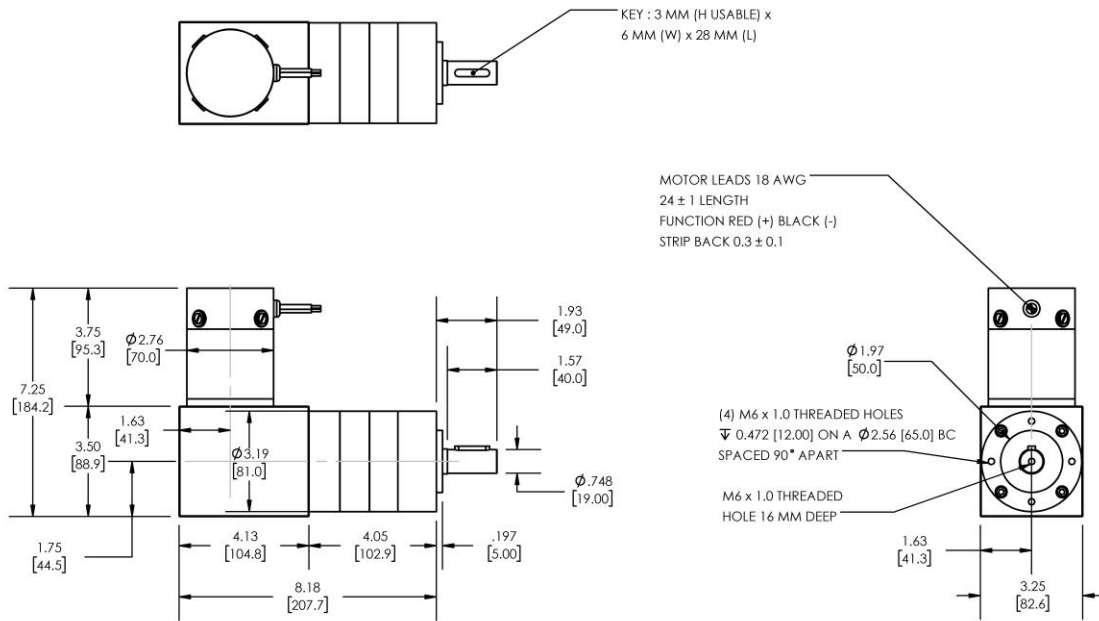


**Model Number:**

**MMP S27-411K-90V GRA81-068**



PLANETARY GEARMOTOR OUTPUT PARAMETERS:	VALUE	UNITS	TOLERANCE
Gearhead Ratio (exact)	68.06 : 1		
Gearhead Shaft Output Speed (at full-load)	45	RPM	MAX
Gearmotor Rated Continuous Torque	366	In-Lbs	MAX
Gearmotor Rated Peak Torque	1741++	In-Lbs	----
Gearhead Standard Backlash	36	Arc Minutes	MAX
Gearhead Efficiency	70%	----	----
Output Shaft Radial Load Capacity	225	Lbs	MAX
Output Shaft Axial Load Capacity	45	Lbs	MAX
Gearmotor Total Weight	14	Lbs	MAX

++ All Peak Torque values are dependent upon duty. Contact our sales office for details.

DC MOTOR PERFORMANCE PARAMETERS:	VALUE	UNITS	TOLERANCE
Rated DC Voltage	90	DC VOLTS	----
Rated Continuous Current	4.3	AMPERES	----
No-Load Speed	3659	RPM	MAX
Rated Speed	3060	RPM	+/- 15%
Rated Continuous Power Out	279	WATTS	+/- 15%
Rated Continuous Torque	123	OZ-IN	----
Peak Torque (motor only)	585	OZ-IN	----
No-Load Current	0.60	AMPERES	MAX
Back EMF Constant (Ke)	24.6	V/KRPM	+/- 10%
Torque Constant (Kt)	33.3	OZ-IN/AMP	+/- 10%
DC Armature Resistance	3.41	OHMS	+/- 15%
Armature Inductance	2.20	mH	+/- 15%
Armature temperature	155	DEG. C	MAX

**NOTES:**

- ENCODER & BRAKE OPTIONS AVAILABLE – [FOLLOW THIS LINK FOR DETAILS](#)
- NEMA MOUNTING FLANGE OPTION AVAILABLE – [FOLLOW THIS LINK FOR DETAILS](#)

## MIDWEST MOTION PRODUCTS, INC

DESIGN, MANUFACTURING & DISTRIBUTION - MOTION CONTROL EQUIPMENT

[www.midwestmotion.com](http://www.midwestmotion.com)

email: [sales@midwestmotion.com](mailto:sales@midwestmotion.com)